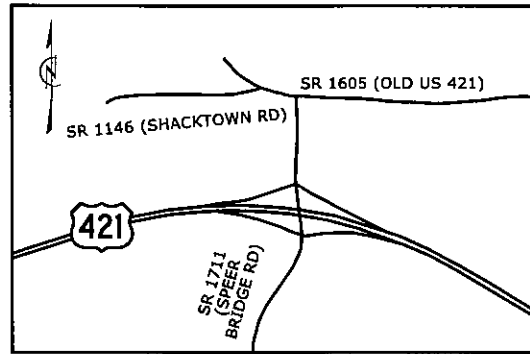


GAS/ATTRACTION SERVICES
 US 421 AT SR 1711
 (SPEER BRIDGE RD)
 EXIT 251

STATE OF NORTH CAROLINA
 DEPARTMENT OF TRANSPORTATION

LOGO NO. L-11-US421-E251 / SHEET NO. SIGN-1
 APPROVED: [Signature]
 DATE: 11-13-2019
 SEAL
 NORTH CAROLINA PROFESSIONAL ENGINEER
 SEAL 20675
 CHARLES A. JOHNSON III



LOGO SIGNING PLANS
 YADKIN COUNTY

SUMMARY OF QUANTITIES

ITEM NO.	ITEM DESCRIPTION		QUANTITY	UNIT
DESC. NO.	SECT. NO.			
0000100000	800	MOBILIZATION	1	LS
4048000000	902	REINFORCED CONCRETE SIGN FOUNDATIONS	2	CY
4060000000	903	SUPPORTS, BREAKAWAY STEEL BEAM	2223	LB
4110000000	904	SIGN ERECTION, TYPE A (GROUND MOUNTED) 450	4	EA
4118300000	904	SIGN ERECTION, LOGO TO PANEL	4	EA
4138000000	907	DISPOSAL OF SUPPORT, STEEL BEAM	8	EA
4235000000	907	STOCKPILE OF SIGN, A & B (GROUND MOUNTED)	4	EA
S	SP	SIGN ERECTION, LOGO MILEAGE PANEL TO SIGN	2	EA
S	SP	TRAFFIC CONTROL	1	LS

PROJECT NOTES

- A ERECT PROPOSED SIGN ON EXISTING SUPPORTS WITH NEW H-SECTION: REMOVE AND DISPOSE OF EXISTING H-SECTION (SEE PAY ITEM NOTE 3) AND REPLACE WITH NEW H-SECTION.
- B PAY ITEM NOTE 2 ON THIS PROJECT MAY REFER TO RELOCATION OF LOGO PANELS, WHICH INCLUDES DETACHING THE PANELS FROM EXISTING SIGNS AS WELL AS ERECTING THEM ON NEW SIGNS.
- C PAY ITEM NOTE 5 ON THIS PROJECT MAY REFER TO RELOCATION OF LOGO MILEAGE PANELS, WHICH INCLUDES DETACHING THE PANELS FROM EXISTING SIGNS AS WELL AS ERECTING THEM TO NEW SIGNS.

GENERAL NOTES

- SIGNS FURNISHED BY THE STATE.
- CONTRACTOR SHALL OBSERVE: STANDARD SPECIFICATIONS FOR ROADS AND STRUCTURES, DIVISION 9, SECTIONS 900 THRU 907 UNLESS SPECIFICALLY WAIVED BY THE ENGINEER.
- WORK ZONE TRAFFIC CONTROL DEVICES PROVISIONS APPLY.
- SIGN LOCATIONS ARE MARKED IN THE FIELD BY PAINT AND/ OR STAKES. IF PRESENT, STAKES MARK APPROXIMATE LOCATIONS OF SUPPORTS. IT IS INCUMBENT UPON THE CONTRACTOR TO LOCATE SUPPORTS ACCORDING TO ROADWAY STANDARD DRAWING 904.10 AND ALL OTHER APPLICABLE STANDARDS.
- CLEARING MAY BE REQUIRED FOR SIGHT DISTANCE. IF NEEDED, CLEAR VEGETATION ACCORDING TO SECTION 903-3 OF THE SPECIFICATIONS. CLEARING IS INCIDENTAL TO SIGN SUPPORTS.

PAY ITEM NOTES

- SIGN ERECTION, TYPE A (GROUND MOUNTED)
- SIGN ERECTION, LOGO TO PANEL
- DISPOSAL OF SUPPORT, STEEL BEAM
- STOCKPILE OF SIGN, A (GROUND MOUNTED)
- SIGN ERECTION, LOGO MILEAGE PANEL TO SIGN

STATE FURNISHED SIGNS ITEM DESCRIPTIONS	QUANTITY	UNIT
TYPE A LOGO SIGNS.....	450.00	SF

ROADWAY STANDARD DRAWINGS

THE FOLLOWING ROADWAY STANDARDS AS APPEAR IN "ROADWAY STANDARD DRAWINGS" - PROJECT SERVICES UNIT - N.C. DEPARTMENT OF TRANSPORTATION - RALEIGH, N.C., DATED JANUARY 2018 ARE APPLICABLE TO THIS PROJECT AND BY REFERENCE HEREBY ARE CONSIDERED A PART OF THESE PLANS:

STD. NO.	TITLE
901.10	TYPE 'A' SIGNS
901.70	SIGN STRINGERS AND SUPPORT SPACING
901.80	SIGN MOUNTING DETAILS - FOR TYPE A AND TYPE B SIGNS
903.10	GROUND MOUNTED SIGN SUPPORTS
904.10	ORIENTATION OF GROUND MOUNTED SIGNS
1101.02	TEMPORARY LANE CLOSURES
1101.04	TEMPORARY SHOULDER CLOSURES
1101.11	TRAFFIC CONTROL DESIGN TABLES

INDEX

SHEET NO.	DESCRIPTION
SIGN-1	TITLE SHEET
SIGN-2	SUPPORT INFORMATION
SIGN-3-6	SIGNING PLAN SHEETS
TCP-1	TRAFFIC CONTROL PLAN

PLANS PREPARED FOR: N.C.D.O.T. SIGNING AND DELINEATION UNIT

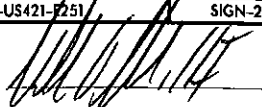
MATT SPRINGER, PE SIGNING & DELINEATION STANDARDS ENGINEER
 JOSEPH WOODIE DIVISION 11 LOGO COORDINATOR



PLANS PREPARED BY:
HNTB HNTB NORTH CAROLINA, P.C.
 343 E. Six Forks Road, Suite 200
 Raleigh, North Carolina 27609
 NC License No: C-1554
 (919) 546-8897
 C.A. JOHNSON, III, PE SIGNING PROJECT ENGINEER
 T.R. TERRELL SIGNING SENIOR DESIGN TECHNICIAN
 C.W. WEDWICK, EI SIGNING DESIGN ENGINEER

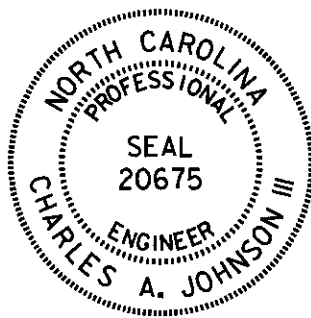
L-11-US421-E251

LOGO NO. L-11-US421-R251 SHEET NO. SIGN-2

APPROVED: 

DATE: 11-13-2019

SEAL

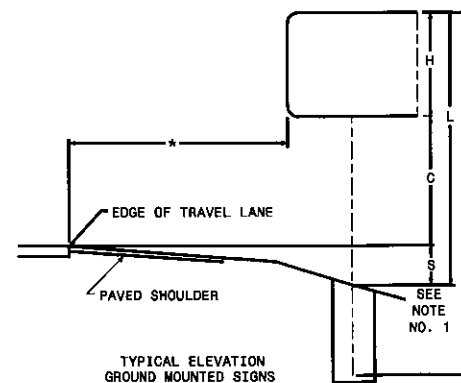
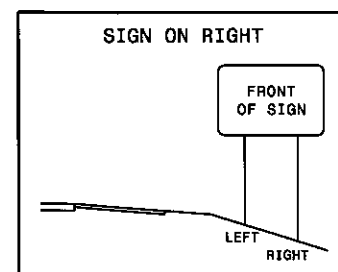
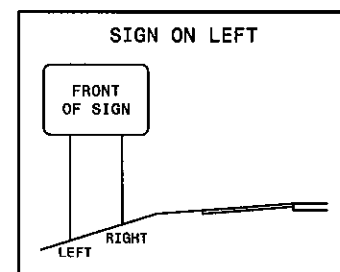


Version: 3.1 Posted: 6/2/2017

NUMBER	TYPE	SIGN SIZE (in.)			ROADWAY STATION	NUMBER OF SUPPORTS	BEAM SECTION	SUPPORT TYPE BA or S	OMNI COUPLER	ATTACHMENT METHOD	MOUNTING METHOD	HORIZONTAL CLEARANCE* (ft.)	SUPPORT SPACING	LENGTH (ft)			LEFT SUPPORT (ft)			CENTER SUPPORT (ft)			RIGHT SUPPORT (ft)			SUPPORT WEIGHTS		FOOTINGS				FIELD VERIFIED (mm/dd/yy)	
		w	x	h										SNS HT "H"	MTG HT "C"	EMBED-MENT	S	L	LENGTH	S	L	LENGTH	S	L	LENGTH	B/A (lbs.)	SIMPLE (lbs.)	DIAMETER (ft.)	DEPTH (ft.)	REINFORCED (c.y.)	PLAIN (c.y.)		
		101	A	180										x	138	US 421 NB	2	W10X22	BA	N/A	N/A	N/A	17.00	8.79	11.50	7.00	4.0	4.00	22.50	26.50	0.00		0.00
**701	A	180	x	138	US 421 SB	2	W8X21	BA	N/A	N/A	N/A	26.00	8.70	11.50	7.00	N/A	0.00	0.00	11.50	0.00	0.00	0.00	0.00	0.00	0.00	11.50	483.00	0	0.0	0	0.00	0.00	6/26/2019
**702	A	90	x	84	SB RAMP LT	2	W6X9	BA	N/A	N/A	N/A	16.50	4.20	7.00	7.00	N/A	0.00	0.00	7.00	0.00	0.00	0.00	0.00	0.00	7.00	126.00	0	0.0	0	0.00	0.00	6/26/2019	
**703	A	90	x	84	NB RAMP LT	2	W6X9	BA	N/A	N/A	N/A	19.50	4.50	7.00	7.00	N/A	0.00	0.00	7.00	0.00	0.00	0.00	0.00	0.00	7.00	126.00	0	0.0	0	0.00	0.00	6/26/2019	

** Replace existing 'H' section with new 'H' section.

TOTAL	TOTAL	TOTAL	TOTAL
2222.60	0.00	1.64	0.00
USE:	2223.00	0.00	2.00 0.00



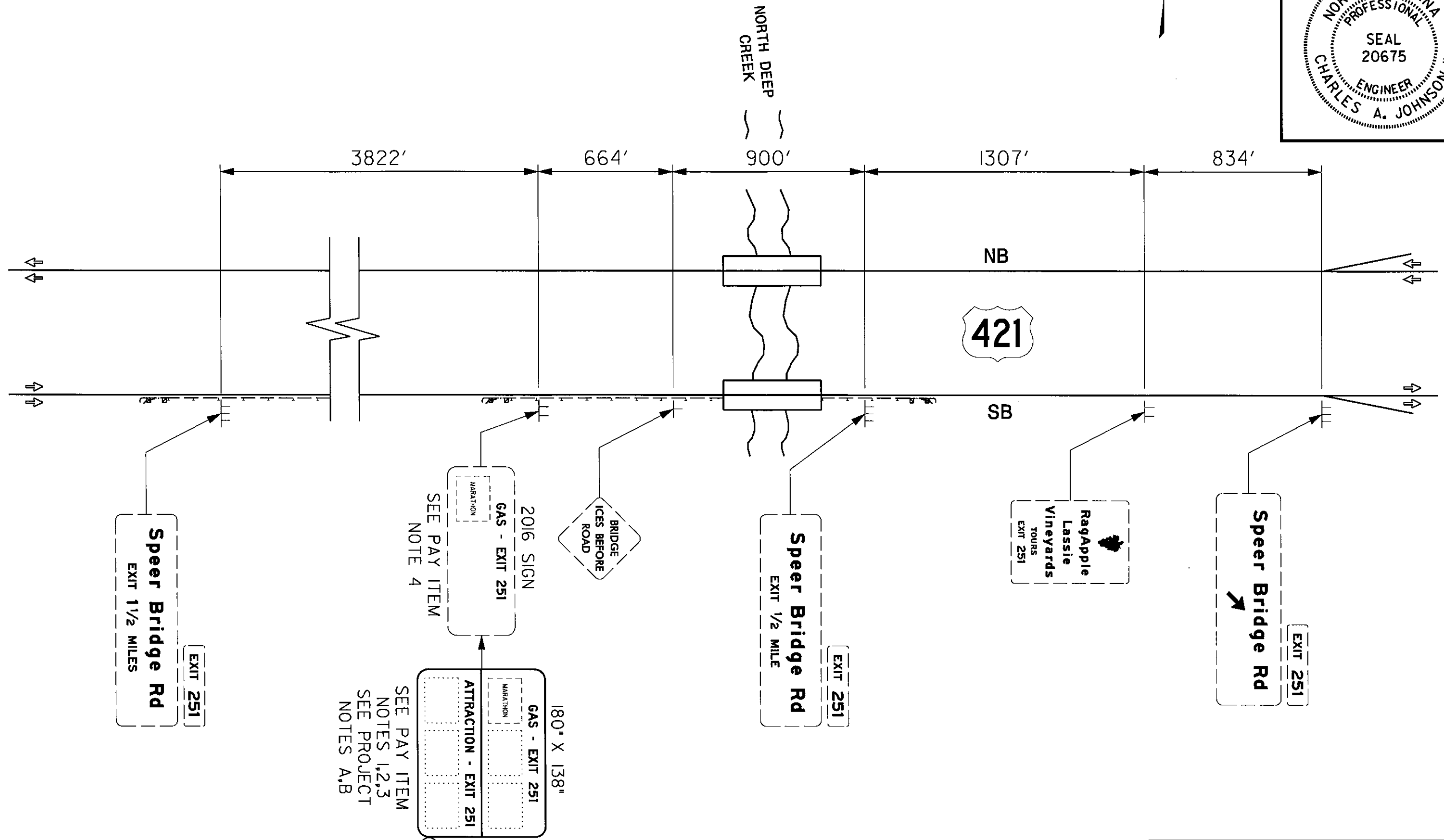
NOTES

- DIMENSION "S" REPRESENTS AN INCREASE (+), OR A DECREASE (-) IN POLE LENGTH, RELATIVE TO THE ELEVATION OF THE EDGE OF TRAVEL LANE.
- PLAN LOCATIONS FOR EXISTING UTILITIES ARE BASED ON THE BEST AVAILABLE INFORMATION AND MAY NOT BE PRECISELY ACCURATE. THEREFORE, IT IS INCUMBENT UPON THE CONTRACTOR TO DETERMINE THE EXACT LOCATION OF UTILITIES BEFORE BEGINNING WORK IN A LOCATION.
- SIGN LOCATIONS ARE MARKED IN THE FIELD BY PAINT AND/OR STAKES. IF PRESENT, FIELD STAKES MARK APPROXIMATE LOCATIONS OF SUPPORTS. IT IS INCUMBENT UPON THE CONTRACTOR TO LOCATE SUPPORTS ACCORDING TO ROADWAY STANDARD DRAWING 904.1 AND ALL OTHER APPLICABLE STANDARDS.

HNTB HNTB NORTH CAROLINA, P.C.
 343 E. Six Forks Road, Suite 200
 Raleigh, North Carolina 27609
 NC License No: C-1554
 (919) 546-8997

**TYPE A
 GROUND MOUNTED SIGNS
 US 421 AT SR 1771
 (SPEER BRIDGE RD) EXIT 251**

LOGO NO. L-11-US421-E251	SHEET NO. SIGN-3
APPROVED: <i>[Signature]</i>	
DATE: 11-13-2019	
SEAL	




SEE PAY ITEM
NOTES 1,2,3
SEE PROJECT
NOTES A,B

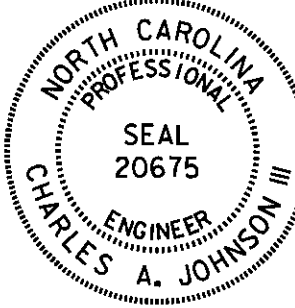
SEE PAY ITEM
NOTES 1,2,3
SEE PROJECT
NOTES A,B

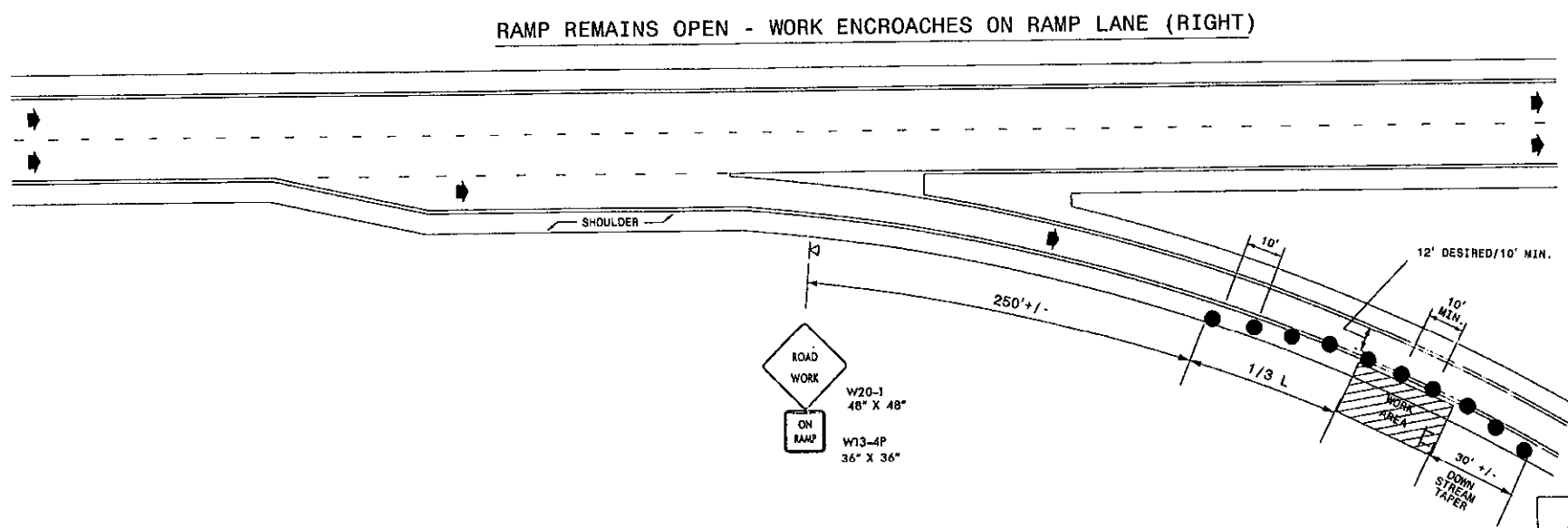
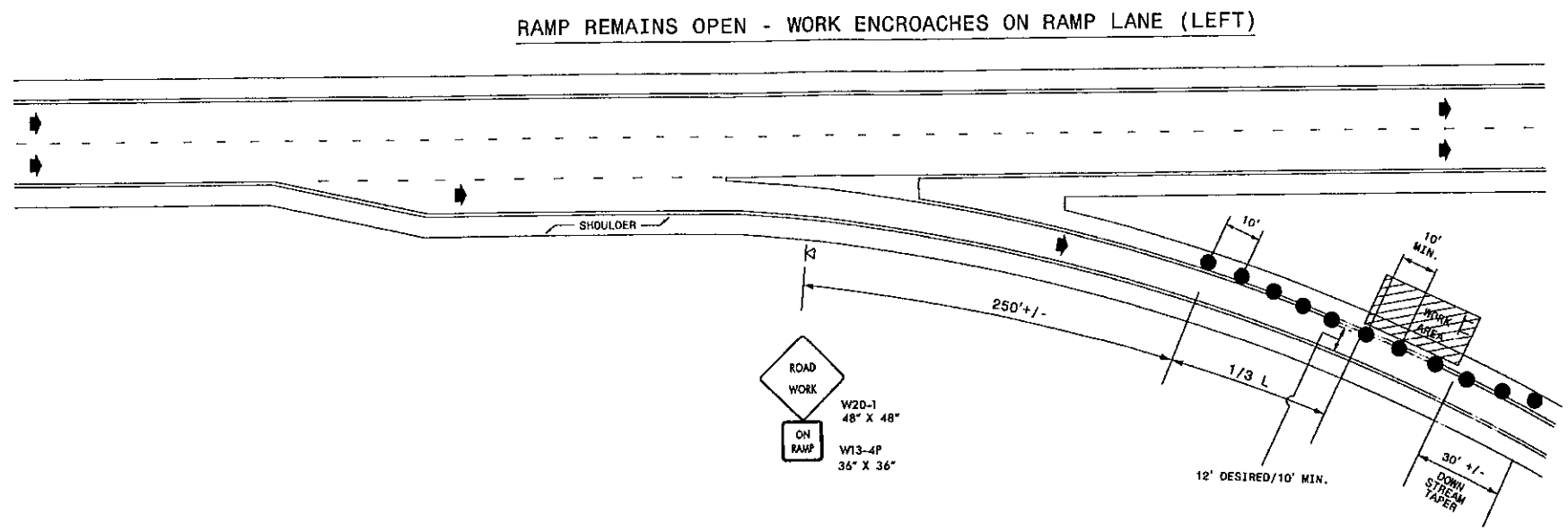
SEE PAY ITEM
NOTE 4

HNTB HNTB NORTH CAROLINA, P.C.
343 E. Six Forks Road, Suite 200
Raleigh, North Carolina 27609
NC License No: C-1554
(919) 546-8997

**US 421 AT
SR 1711 (SPEER BRIDGE RD)
EXIT 251**

SHEET NO. TCP-1
 APPROVED: [Signature]
 DATE: 6/16/2017
 SEAL


SEAL




GENERAL NOTES

1. REFER TO MUTCD SECTION 6F.25 FOR SIGN W13-4P GUIDANCE.
2. SIGNS SHALL NOT BE DISPLAYED WHEN WORK IS NOT IN EFFECT.
3. THE CONTRACTOR SHALL NOT CROSS MEDIANS, RAMPS, OR LOOPS WITH WORK VEHICLES UNLESS A LOCATION HAS BEEN APPROVED BY THE ENGINEER.
4. REFER TO ROADWAY STANDARD DRAWING 1101.11, SHEET 1 OF 4. USE 1/2 POSTED MAINLINE SPEED FOR (S) VALUE. USE THE LANE ENCROACHMENT DISTANCE AS THE LATERAL WIDTH (W) TO DETERMINE "L".

LEGEND

- ┌ LOGO SIGN
- DRUM
- ⊞ PORTABLE SIGN
- ➔ DIRECTION OF TRAFFIC FLOW

TRAFFIC CONTROL ON RAMP FOR LOGO SIGN INSTALLATION